

# I am not a school counselor, so what?

## Reach and Redirect



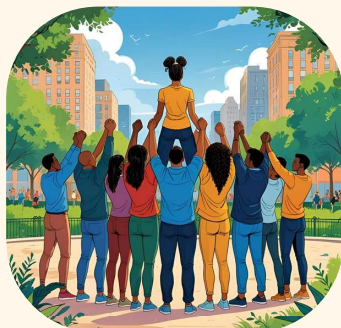
“Warn the unruly.” Correct behaviors without breaking the spirit. Establish behavioral norms. Employ Positive Behavioral Interventions and Supports (PBIS).

## Hug the Heart



“Comfort the fainthearted.” Recognize the impact of trauma in learning environments. Begin with establishing safety. Employ Trauma-Informed Care.

## Lift and Link



“Uphold the weak.” Identify the underserved. Link them to necessary resources. Employ Data-Driven Decision Making to identify and respond to gaps.

## Rinse and Repeat



“Be patient with all.” Even with best their effort, some students may not get it academically or behaviorally. Extend grace and support repeatedly. Employ Response to Intervention (RTI) strategies.

## No Tit for Tat



“See to it that no one renders evil for evil.” Teach students that conflict is not a bad thing. It is more about the “how” than the “what” of conflicts. Employ Restorative Justice Principles.

## Good and Full



“Do good for yourselves and for all.” You cannot pour from an empty cup. Working with students is a challenging job that requires you to be the best version of yourself. Employ Self-care and Beneficence Practices.