

GLOBAL CHRISTIAN EDUCATORS' CONFERENCE 2024



Supporting Christian Schools
Around the World

ORU_{ef}

**GLOBAL
CHRISTIAN
EDUCATORS'
CONFERENCE**



TABLE OF CONTENTS

| | |
|-------------------------|-------|
| Conference Schedule | 1 |
| Vendor Information | 2-3 |
| General Session Speaker | 4-5 |
| Vendor Information | 6-7 |
| Workshops: Session A | 8-10 |
| Vendor Information | 11-13 |
| Workshops: Session B | 14-16 |
| Vendor Information | 17-19 |
| Workshops: Session C | 20-22 |
| Vendor Information | 23-24 |
| Workshops: Session D | 25-27 |
| Vendor Information | 28 |
| CHSA | 29 |



SPONSORED BY ORU COLLEGE OF EDUCATION

COLLEGE OF EDUCATION

Graduate Degree Options

Master of Education in Teaching & Educational Leadership

- Building Level Leadership
- Interdisciplinary Studies
- Teaching
- School Counseling

Doctor of Education in Educational Leadership

- Christian School Administration
- Public School Administration
- Higher Education Administration
- Higher Education Teaching



Scan to learn more about the
College of Education



HYBRID MODULAR FORMAT

This format combines face-to-face intensives and asynchronous online study.

Each class meets for one two-and-a-half day intensive. You can join via ZOOM if traveling to Tulsa is not possible.

Intensives meet Thursday evening and Friday/Saturday during the school year.

Modular classes are offered three times each semester during the school year and twice in the summer.



CHRISTIAN SCHOOL SERVICE SCHOLARSHIP

50% off tuition for anyone employed full-time at a Christian school or Oklahoma public school for up to 6 semesters.

Conference Schedule

| | |
|---------------------|------------------------------------------------------------------------------------------------------------------------------------------------------------|
| 7:30 am - 8:00 am | Check-in/Vendor Exhibit |
| 8:00 am - 8:30 am | Welcome/Announcements Praise and Worship |
| 8:30 am - 9:20 am | General Session 1 Speaker: Dr. Kim Boyd <i>"Transformed Educators; Transforming Society; The Miracle Ahead-A Transformed Generation."</i> |
| 9:20 am - 9:35 am | Break/Vendor Exhibit |
| 9:35 am - 10:25 am | Workshop Session A |
| 10:25 am - 10:35 am | Break/Vendor Exhibit |
| 10:35 am - 11:25 am | Workshop Session B |
| 11:25 am - 12:25 pm | Lunch/Vendor Exhibit |
| 12:25 pm - 1:15 pm | Workshop Session C |
| 1:15 pm - 1:25 pm | Break/Vendor Exhibit |
| 1:25 pm - 2:15 pm | Workshop Session D |
| 2:15 pm - 2:25 pm | Break/Vendor Exhibit |
| 2:25 pm - 2:40 pm | Awards of Excellence Administrator & Teacher of the Year |
| 2:40 pm - 3:40 pm | General Session 2 Speaker: Dr. George Barna <i>"Biblical World View"</i> |
| 3:40 pm - 3:50 pm | Closing |

Worldview Assessment



ARIZONA CHRISTIAN
UNIVERSITY

VISIT OUR BOOTH!

How can you help students develop a biblical worldview?

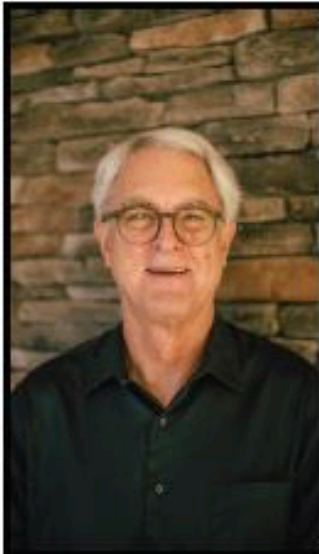
Having a biblical worldview is learning to
think like Jesus, so you can act like Jesus.

And having a biblical worldview is the key
to being a lifelong disciple of Jesus.

The Arizona Christian University Worldview Assessment is specially created
for use in the K-12 setting-and it enables educators to measure
the worldview development of students in grades 4, 8, and 12.

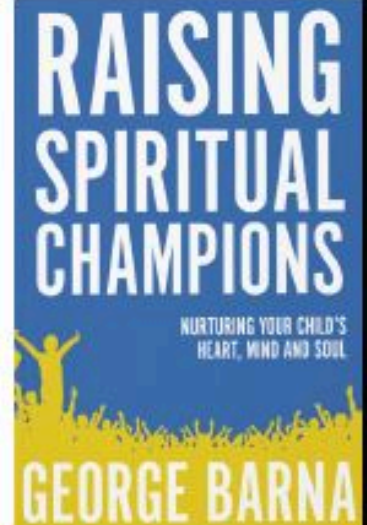
The Arizona Christian University Worldview Assessment is an easy, online tool
to measure your students' worldview beliefs and behaviors —
so that you can better guide their worldview development in the classroom.

And it pairs perfectly with *Raising Spiritual Champions: Nurturing Your Child's Heart, Mind
and Soul* - the new research-based worldview resource from the creator of the
Arizona Christian University Worldview Assessment, Dr. George Barna.



Created by author and veteran researcher
Dr. George Barna and the Cultural Research Center
at Arizona Christian University,
based on 40+ years of research experience.

Dr. Barna is author of *Raising Spiritual Champions:
Nurturing Your Child's Heart, Mind and Soul*,
published by Arizona Christian University Press.
Available at www.RaisingSpiritualChampionsBook.com
(including quantity orders) and Amazon.



For more information VISIT

www.ACUworldview.com



© 2024 BJU Press. All rights reserved.



MAKING AN IMPACT

50 YEARS OF SUPPORTING CHRISTIAN EDUCATION

For fifty years, BJU Press has supported Christian educators who shape students' hearts and minds for the path God has prepared for them. We are grateful to collaborate with the many educators, churches, and parents who share this mission. Our dedication remains centered on providing academically rigorous K-12 Christian textbooks and learning technologies written from a biblical worldview. Our hope is that these materials will empower educators to impart knowledge and shape lives in both memorable and meaningful ways.

Visit bjupress.com to see how we can help you impact students for eternity.

Dr. George Barna

**Researcher, Author
Cultural Research Center,
University of Arizona**



Barna is a Professor at Arizona Christian University and Director of Research at its Cultural Research Center, focusing on worldview assessment and development and cultural transformation. He is also the Sr. Research Fellow at Family Research Council Center for Biblical Worldview, and a Fellow at the Townsend Institute at Concordia University.

He was the founder The Barna Group (which he sold in 2009), the Barna Institute, the American Culture and Faith Institute, and Metaformation. Through those entities he has conducted groundbreaking research on worldview, cultural transformation, ministry applications, spiritual development, and politics. He has provided research and strategy for several hundred parachurch ministries, thousands of Christian churches, the U.S. military, Fortune 500 companies, and has supplied polling and strategy to four presidential candidates. He has also served on multiple Boards of Directors and Advisory Boards.

To date, Barna has authored or co-authored 60 books addressing social and religious trends, worldview, leadership, spiritual development, church dynamics, and cultural transformation. They include New York Times and amazon bestsellers and several award-winning books. His books have been translated into more than a dozen foreign languages.

He previously taught at several universities and seminaries; served as the Teaching Pastor of a large, multi-ethnic church; pastor of a house church; an elder in four congregations; and has helped to start several churches.

After graduating summa cum laude from Boston College, Barna earned two Master's degrees from Rutgers University and received a doctorate from Dallas Baptist University.

George and his wife Nancy attended high school, college, and grad school together before marrying in 1978. They have three adopted daughters and three grandchildren, and currently live on the central California coast and in Phoenix. In his free time, George likes to watch the Yankees, read novels, play bass and listen to music, enjoy the ocean, hang out with his grandchildren and his blind dog (Ray Charles).

Contact information:
georgebarna@gmail.com

Kim E. Boyd, Ed.D.

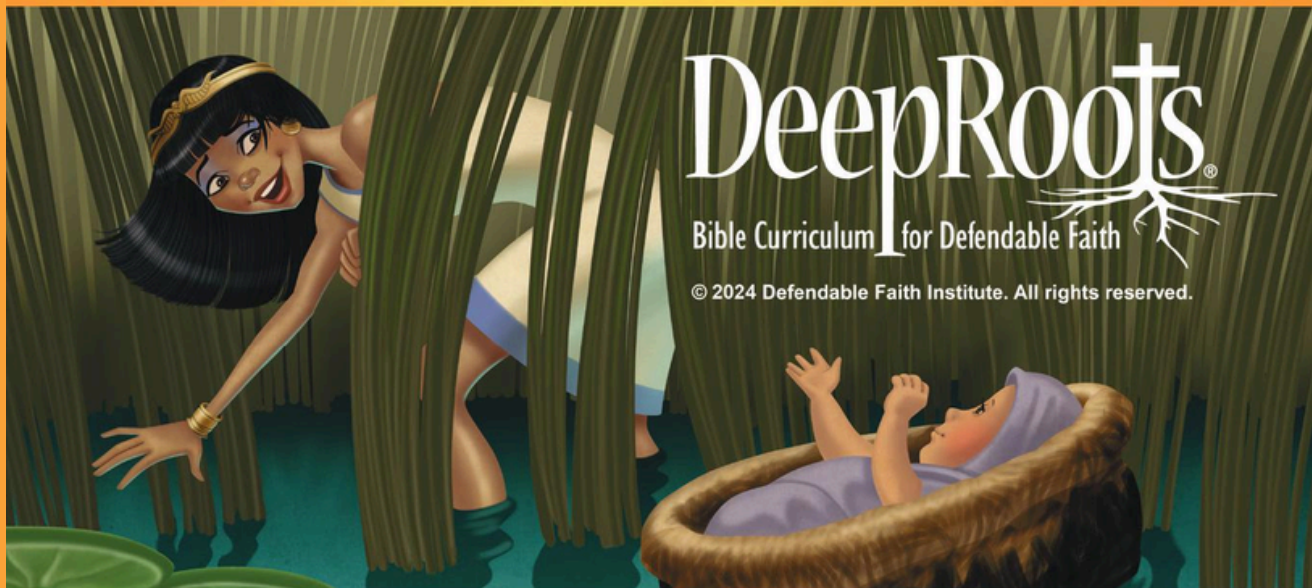
**Assistant to the Provost for Exceptional
Teaching and Innovation
Dean, College of Education
Oral Roberts University**



Dr. Kim Boyd serves as the Assistant to the Provost for Exceptional Teaching and Innovation and as the Dean of the College of Education at Oral Roberts University. Dr. Boyd is a Commissioner for the Council of Accreditation for Educator Preparation (CAEP) and assists in providing guidance for meeting the CAEP standards as a repeatedly invited presenter at the CAEP-sponsored conferences.

Dr. Boyd sits on several national and international education boards, including the Oral Roberts University Educational Fellowship (ORUEF) and the International Christian Accreditation Association. Dr. Boyd has presented at numerous conferences, focusing on performance-based assessment, educational pedagogy, and leadership development.

**Looking for a more rigorous
Bible curriculum? Look *deeper*.**



**Engaging illustrations, chronological teaching,
and interactive features transform students'
learning from a static absorption to a
multi-dimensional experience.**

DeepRoots sinks students' faith roots deep into the Bible to halt moral erosion and Christian apathy. Equip your students with training and tools to stand firm in the face of today's cultural challenges with DeepRoots Bible Curriculum for Defendable Faith.

This new, digital Bible curriculum integrates archaeology, apologetics, history, science, and geography to model a biblical worldview. It includes an interactive timeline, maps, slideshows, songs, videos, and more.

**Grades K-6 available now!
Get your sample lesson today.**

(888) 964-4575

**info@deeprootsbible.com
www.DeepRootsBible.com**



Renaissance
See Every Student.

Helping teachers help students help themselves.

Renaissance provides the right digital tools and
insights to unlock the potential within every child.

© 2023 Renaissance Learning, Inc. All rights reserved. | www.renaissance.com
662299.0423



CHURCH & MINISTRY ALLIANCE **7**

GLOBAL CHRISTIAN EDUCATORS' CONFERENCE 2024



WORKSHOPS: SESSION A

9:35 am - 10:25 am

Workshop Tracks

Acc - Accreditation Adm - Administration EL - Early Learning Elem - Elementary Gen - General Mid/High - Middle/High School

Instructional Leadership: Equip, Enhance, and Empower

Room - 1

[Acc, Adm, EL, Elem, Gen, Mid/High]

Max Vikhter - Head of School, Christian Fellowship School, Columbia, MO

This presentation delves into the three essential functions of instructional leadership: coaching and feedback, supervision, and evaluation. Move the needle in your school by investing and building up your most valuable human resource. Attendees will explore effective methods for data collection and analysis, learn how to provide timely feedback, and develop strategies that align with Leadership, Learning, and Resource domains.

Administrators will leave "equipped to equip" using data to inform. Happy teaching!

Providing Social Emotional & Trauma Support for Students

Room - 2

[EL, Elem, Gen, Mid/High]

Dr. Carolyn Stubbs - Director of Program for Academic Vision & Empowerment/ Advantage Program Coordinator, ORU

There is a growing need for effective social-emotional learning opportunities for students especially those impacted by trauma. This workshop will provide practical steps that teachers and schools can take to meet the social-emotional needs of all students. Special emphasis will be placed on implementing activities and processes in the classroom to support social-emotional development.

Navigating Social Media Trends and Threats to School Security

Room - 3

[Acc, Adm, EL, Elem, Gen, Mid/High]

Ghada Wahdan - Protective Security Advisor, Department of Homeland Security (DHS) / Cybersecurity and Infrastructure Security Agency (CISA)

General overview of the importance of understanding social media in the context of school security.

Part 1: Understanding Social Media Trends

Part 2: Social Media Threats to School Security

Part 3: Strategies for Enhancing School Security

Part 4: Local and National Case Studies

Como convertir a tu colegio en Bilingüe, ¡Ya!

Room - 4

[Adm, Elem, Mid/High]

Yair Herrera - English Teacher / Bilingualism Leader, Colegio Boston Internacional SAS, Baranquilla, Colombia

Este taller te permitirá conocer los pasos sencillos a implementar para iniciar la transición de tu colegio a un programa de bilingüismo (Inglés - Español) exitoso, que incluya Inteligencia Emocional y Cultural, Certificación Internacional, Aprendizaje Cooperativo y Colaborativo entre otros.

Beyond the Verse: Unveiling God's Presence in Our Academic Content

Room - 5

[Acc, Adm, EL, Elem, Gen, Mid/High]

Cheryl Riley - Head of School, Victory Christian Center School, Charlotte, NC

In this workshop, we embark on a transformative journey beyond the surface of scripture, delving deep into the heart of Biblical integration within educational contexts. While a single verse can inspire, the richness of God's Word extends far beyond isolated passages. Through dynamic demonstrations and practical applications, participants will learn to reveal God's presence within the content they teach, unlocking profound insights and truths that enrich both their lessons and the lives of their students.

GLOBAL CHRISTIAN EDUCATORS' CONFERENCE 2024



WORKSHOPS: SESSION A

9:35 am - 10:25 am

Workshop Tracks

Acc - Accreditation Adm - Administration EL - Early Learning Elem - Elementary Gen - General Mid/High - Middle/High School

Purpose-Driven Marketing Strategy for Christian Schools

Room - 7

[Adm, Gen]

Jen Paul - President, Digital Consultants

Discover methods to ensure your marketing aligns with and amplifies your school's spiritual mission. Are you looking to align your school's marketing efforts with its spiritual mission? This webinar is designed specifically for Christian school leaders who want to craft purpose-driven marketing strategies. We will cover the foundational principles of faith-based marketing, providing you with actionable steps to create campaigns that honor and reflect your school's spiritual ethos. Learn how to communicate your mission effectively, engage your community, and attract families who share your values. Join us to ensure your marketing not only promotes but also lives out the spiritual essence of your school.

Part 1 - From Ordinary to X-TRORDINARY - 24/7 Leadership Course

Room - 8

[Adm, Gen, Mid/High]

Dr. Richard Eley - President & Founder, The Center for Everyday Leadership, Inc

Learn about the carefully selected skills which have been identified as essential traits that every individual should possess to thrive in both personal and professional spheres. This Course equips students with the skills needed to navigate the complexities of today's world with confidence and competence. This session will look at the first five skills.

Becoming the Teacher God Created You to Be

Room - 9

[Acc, Elem, Mid/High]

Robert Akers - Head of School, Covenant Christian School, Bloomington, IN

God uses every personality type to teach in Christian schools. Teachers often struggle with feelings of inadequacy and "imposter syndrome", especially in the early stages of a career in the classroom; even veteran teachers experience burnout and the feeling of being overwhelmed. The building blocks of a successful teaching experience, such as classroom management and effective pedagogy, can be complicated by the need to master relationships both in and out of the classroom. This session will help educators discover the strengths their unique experiences and testimony bring to the classroom and grow in confidence to be all that God has called them to be.

Effective "Christian" Communication

Room - 10

[Adm, Gen]

Chris Brown - Head of School, Lifestyle Christian School, Conroe, Texas

We've all received the phone call or email that made us want to escape and contemplate a career change! Navigating difficult conversations and personalities can test the resolve of any educator. As Christian educators, we are not only entrusted with being professional in our communications with parent and students but we are also called to mirror Christ in our responses. This workshop looks at the contrast between worldly and Biblical responses. Through real-world examples and practical approaches, we will explore the art of engaging in courageous conversations infused with the love of Christ and guided by an empathetic perspective. Together we can learn how to embody the grace and understanding our faith calls us to, even in the face of adversity.

GLOBAL CHRISTIAN EDUCATORS' CONFERENCE 2024



WORKSHOPS: SESSION A

9:35 am - 10:25 am

Workshop Tracks

Acc - Accreditation Adm - Administration EL - Early Learning Elem - Elementary Gen - General Mid/High - Middle/High School

Digital Discipleship for Christian Schools:

Room - 11

Engaging Students, Equipping Parents, Resourcing Teachers

[Acc, Adm, EL, Elem, Gen, Mid/High]

Ryan Rose - Senior Account Manager, RightNow Media

Join us for a workshop where we'll discuss how to revolutionize your discipleship efforts. Explore the digital age's impact on discipleship and learn how our extensive library of quality video resources and on-demand professional development courses can inspire and engage your school community. Come for insights and tools to help you engage students, equip families, and resource your teachers. Don't miss this chance to maximize RightNow Media's potential for your school's spiritual growth and connect with like-minded leaders.

Development - Where is the Money?

Room - 12

[Adm]

Darla Otto - Development Director, Wesleyan Christian School, Bartlesville, OK

We know that tuition is not enough to meet the annual budget. So where is the rest of the money? This workshop discusses how to position your school to raise the funds needed to meet your annual budget, periodic major needs, and long term sustainability requirements. An overview of a capital campaign will be discussed.

Virtual Pedagogical Microsystem: An Ecological Model for Preservice Teacher Fieldwork

Room - 13

[Adm, EL, Elem, Gen, Mid/HS]

Dr. Libby Adjei - Assistant Professor of Education, College Education, ORU

Amid the pandemic, there was a notable increase in students' utilization of virtual platforms, prompting educational institutions across all levels, from K-12 to higher education, to explore alternative teaching approaches. Furthermore, federally funded initiatives designed to promote post-secondary education among high school students needed help in delivering their services. This workshop delves into a creative collaboration that enabled aspiring teachers to engage in practical fieldwork while providing high school students opportunities to enhance their English skills and forge meaningful connections with adults. Through this collaboration, an emerging concept suggests that virtual environments can function as microcosms with significant impacts on student learning. This workshop offers strategies for leveraging virtual spaces to facilitate meaningful learning experiences for students and educators.

Incorporating Music's Benefits into Your Classrooms

Room - 14

[Adm, EL, Elem, Gen]

Denie Riggs - Founding Director/ Administrator, Perfect Praise

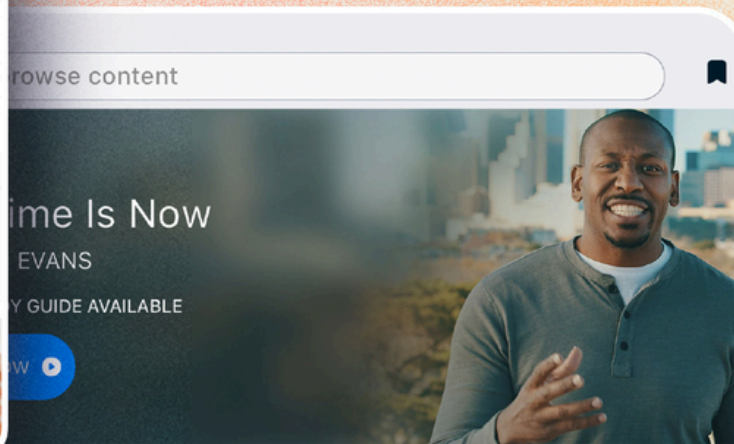
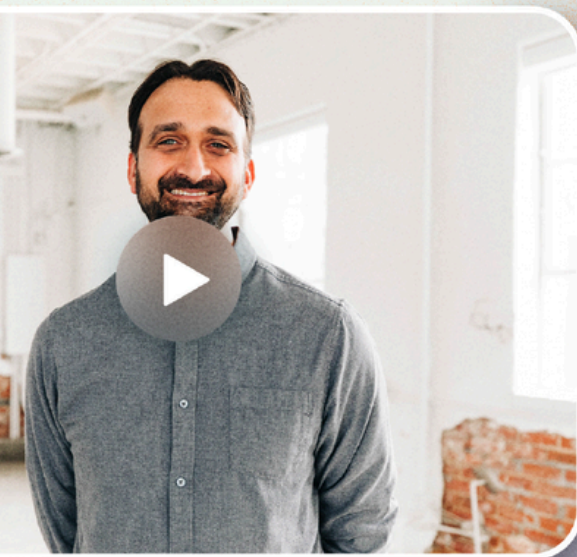
Michael Riggs - President, Perfect Praise

In this workshop, we will investigate four levels of engagement with music and give take-away insights and tips on how to incorporate these levels into your classrooms, releasing amazing benefits spirit, soul and body.

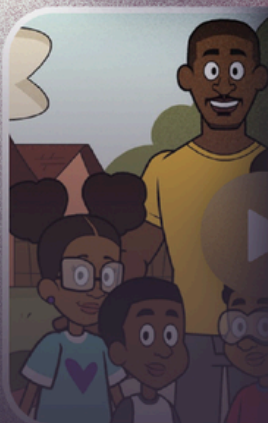
The world's largest video Bible study library for every family in your school.

25,000+ Bible Study Videos From Over
250 Top Christian Publishers and Ministries

schools.rightnowmedia.org



Schools



Middle School



NUA: Move
SARAH CAMPBELL
+2



Finding Truth
FRANCIS CHAN

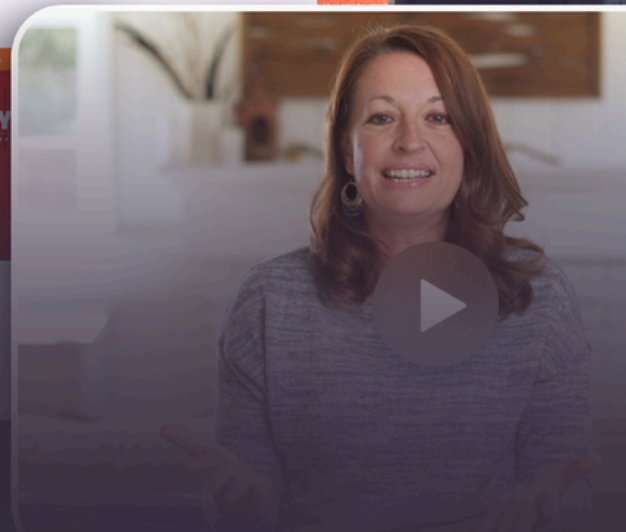
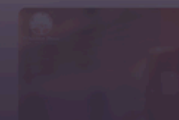
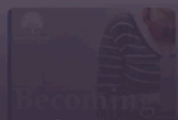


The Third Perso...
ROBERT WATSON



Identity
ERIC MASON

Studies for Teachers



android

Roku



chromecast





PERFECT PRAISE

MATTHEW 21.16B

ORU ADVANTAGE



Learn More.
Scan Here.



JUMP-START YOUR FUTURE
WITH **\$75** CREDIT HOURS **30+** COURSE OPTIONS

ORU's Dual Enrollment Program assists high school students in earning college credit through 15-week online courses. Each semester, students can register for up to 10 transferrable credit hours at \$75 per credit hour.

WHO'S ADVANTAGE FOR?

High school freshmen through seniors can take dual enrollment courses through Advantage.

With over 30 online courses to choose from, this is the perfect opportunity to explore your interests and see what college is all about!



918.495.6670



advantage.oru.edu



advantage@oru.edu

GLOBAL CHRISTIAN EDUCATORS' CONFERENCE 2024



WORKSHOPS: SESSION B

10:35 am - 11:25am

Workshop Tracks

Acc - Accreditation Adm - Administration EL - Early Learning Elem - Elementary Gen - General Mid/High - Middle/High School

Grant Writing Part 2

Room - 1

[Adm, Gen]

Dr. Libby Adjei - College of Education, ORU

Dr. Mary Miller - College of Education, ORU

Dr. Gwetheldene Holzmam - College of Education, ORU

In this intensive class, participants will take a journey through the many facets of grant writing. Through interactive exercises and real-world examples, attendees will gain insights into crafting compelling proposals that stand out. We will delve into various aspects of grant writing, from identifying funding opportunities to writing a convincing narrative and navigating the review process. However, this workshop is about more than just theoretical knowledge. We will take you on a behind-the-scenes adventure, sharing our real-life experiences of writing a grant as a team. From brainstorming ideas to gathering data and navigating the complexities of the application process, we will share our triumphs, our challenges, and the lessons we learned along the way. (Participation in Grant Writing Part 1, presented at GCEC 2023, is not necessary for this session.)

Growing and Sustaining Your School Enrollment

Room - 2

[Adm]

Dr. Jared Johnston - Chair of Graduate Education, ORU

In this workshop, participants will learn what factors drive and sustain Christian school enrollment growth.

Finding the Missing Puzzle Piece to Academic Success

Room - 3

[Adm, Elem, Mid/High]

Dr. Evie Lindberg - College of Education, ORU

This workshop will share insight into what you need to consider in order to help struggling learner to become successful in the world of academics. The focus is on providing practical strategies, tools, tips and techniques to help every student succeed.

Navegando el mundo de los datos: Evaluación en el contexto de una escuela cristiana

Room - 4

[Acc, Adm]

Amarilis Galindo - Head of School, Vineyard Christian School, San Antonio, TX

Dentro del panorama de la educación de hoy en día, los datos y la evaluación juegan un papel crucial en la implementación de estrategias educativas, los resultados del aprendizaje y el avance de la escuela en general. Dentro del contexto de la educación en una escuela cristiana, la integración de las prácticas dirigidas por los datos debe estar alineada a los principios fundamentales de la fe, el desarrollo holístico y el crecimiento espiritual que va mano a mano con los logros académicos.

GLOBAL CHRISTIAN EDUCATORS' CONFERENCE 2024



WORKSHOPS: SESSION B

10:35 am - 11:25am

Workshop Tracks

Acc - Accreditation Adm - Administration EL - Early Learning Elem - Elementary Gen - General Mid/High - Middle/High School

Foundational Elements of School Safety

[Adm, Gen]

Room - 5

Hiram Tabler - Department of Homeland Security (DHS) / Cybersecurity and Infrastructure Security Agency (CISA)

While there isn't a universal safety plan, schools can take common actions to address the foundational elements of school safety. This workshop provides an overview of those essential Foundational Elements to support and strengthen school safety, along with discussion on the available resources provided by the Department of Homeland Security (DHS), Cybersecurity and Infrastructure Security Agency (CISA), and SchoolSafety.gov. These resources are available at no cost to schools and districts with actionable recommendations to create safe and supportive learning environments for students and educators.

Implementing a Retirement Plan

[Adm]

Room - 6

Jeremiah Sanchez - 401K Advisor

Ruth Rivera - Plan Administrator

Taking a proactive approach to better improve retirement outcomes for your dedicated employees.

See Every Student GROW: Renaissance Star Comprehensive Assessment Suite

[Adm, Elem, EL, Gen, Mid/High]

Room - 7

Jessica Rowell - Renaissance

Guide more growth for every student using the most comprehensive K-12 interim and formative assessment suite available, Renaissance Star, provides universal screening, progress monitoring, goal-setting data, and instructional resources to move every student forward. *This session is most appropriate for attendees with no current knowledge of Renaissance Star solutions.*

Sit in Your Student's Seat: From Reading to Studying the Bible

[Elem]

Room - 8

Leah Pitchford - DeepRoots Bible Curriculum

Take your students deeper as you teach them to study God's Word instead of simply reading it. In this hands-on workshop you will play the part of the student as you annotate a verse, examine its context, and explore how to apply it. Learn and practice the inductive Bible study steps of observation, interpretation, and application. Bring these skills home and implement them in your classroom, equipping your students to be hearers, examiners, and doers of the Word!

The Importance of Mission in Christian Schools

[Gen]

Room - 9

Dr. Patrick Otto - Senior Professor in Graduate School of Education, ORU

The foundational purposes of a school under the banner of Christ must be built on wisdom and guidance from the Holy Spirit. Therefore, for the Christian School, the mission is a banner proclaiming the school's purpose and beliefs and is viewed as the standard by which all programs are assessed.

GLOBAL CHRISTIAN EDUCATORS' CONFERENCE 2024



WORKSHOPS: SESSION B

10:35 am - 11:25am

Workshop Tracks

Acc - Accreditation Adm - Administration EL - Early Learning Elem - Elementary Gen - General Mid/High - Middle/High School

So Glad You Stayed: Navigating Challenges and Inspiring Change in Education

Room - 10

[Adm, EL, Elem, Gen, Mid/High]

Cheryl Riley - Head of School, Victory Christian Center School, Charlotte, NC

In the wake of a global pandemic, the landscape of education has shifted dramatically, presenting educators with unprecedented challenges and complexities. From the pervasive influence of social media to the nuances of addressing issues like bullying, transgenderism, and neurodiversity, the journey of the modern educator is fraught with obstacles. Yet, amidst these challenges, there is hope, resilience, and an unwavering commitment to shaping the future. "So Glad You Stayed" is more than a workshop; it's a heartfelt expression of gratitude and recognition for the tireless dedication of Christian educators who have chosen to remain steadfast in their calling. In this empowering session, we come together as a community to acknowledge the realities of our educational landscape while finding strength and encouragement in our shared mission.

ORU Educational Partnerships: What You Need To Know

Room - 11

[Gen]

Dr. Randy Loescher - Director of Church and Educational Partnerships, ORU

What does it mean to be an Educational Partner with Oral Roberts University and why should I become one? Come to this workshop to find out how partnering with Oral Roberts University can help your students, faculty, and staff gain access to highly quality, Holy Spirit-empowered education that is affordable! The best part is that this partnership applies to both domestic and international school, so join us today to learn more!

Marketing That Works for Your School

Room - 12

[Adm, Gen]

Darla Otto - Development Director, Wesleyan Christian School, Bartlesville, OK

Your school is a business and can't survive without marketing. But where do you start? What works for Christian Schools? Who is your audience? What needs to be communicated? What are cost effective methods that work? What are common mistakes to avoid? This workshop provides practical, cost effective, proven methods to promote your school.

Vocal Health for the Singer and Public Speakers

Room - 14

[Adm, Gen, EL, Elem, Mid/High]

Dr. David Dehner - Associate Professor Director of Choral Studies, ORU

The singer/public speakers' voice is used extensively in education/ministry careers. Often vocal habits attribute quality or lack of quality to the sounds of speech and singing. We will address healthy vocal habits and unhealthy habits. Vocal disfunction can lead to vocal fold damage. Vocal expression was God's idea for worship, public speaking and prayer. It's important that we keep the vocal instrument healthy and effective. This class will also offer demonstration coaching for singers and speakers.



Center for Everyday Leadership



FROM Ordinary to X-*TRORDINARY*



24/7 Leadership Course: 10 Key Leadership Skills

THROUGH THIS PROGRAM, STUDENTS WILL:

- ✓ Cultivate Essential Leadership Traits
- ✓ Apply Leadership Skills in Real-Life Scenarios
- ✓ Foster Personal and Professional Growth

TRANSFORM YOUR
STUDENTS LEADERSHIP
JOURNEY!

RICHARD 'DOC' ELEY, PH.D.

FOR MORE INFORMATION CONTACT:

Sharlene Barrozo
sharlene@c4edl.com

visit our website

www.centerforeverydayleadership.com

CHURCH & EDUCATIONAL PARTNERSHIPS

*Serving and resourcing key partners to build up
Whole Leaders for the Whole World*



*Scan this to visit
our website!*

WHO WE ARE

Church and Educational Partnerships exists for one reason: To make ORU education more accessible AND more affordable for churches, schools, businesses, ministries, and everyone involved within those organizations. Whether you are local or global, we want to serve you as you serve others!

Interested in Becoming a Partner? Contact our team TODAY!

Dr. Randall Loescher (Domestic): rloescher@oru.edu

Dr. Jenny Fang (International): yfang@oru.edu



FAITH-BASED DIGITAL MARKETING



christianschoolmarketing.ca



Mission-Driven Marketing Plan

Ignite meaningful connections and propel your brand towards impactful change.



Clarify Your Message Amidst the Noise

Illuminate your Christian school's story in order to connect emotionally with the right audience, and foster a legacy of faith-infused education for future generations.



Evaluate Success With Metrics

Assess retargeting against goals. Identify successes and areas to improve for future campaigns.



HOW WE SERVE YOU?

Website



Marketing



SEO



Social Media



Mobile App



GLOBAL CHRISTIAN EDUCATORS' CONFERENCE 2024



WORKSHOPS: SESSION C

12:25 pm - 1:15 pm

Workshop Tracks

Acc - Accreditation Adm - Administration EL - Early Learning Elem - Elementary Gen - General Mid/High - Middle/High School

A Roadmap for Rigorous Learning

Room - 1

[EL, Elem, Gen, Mid/High]

Dr. Charlene Martin - Senior Professor in Literacy, ORU

Are your lessons inconsistently rigorous? Are there days when some lessons are great and some fall flat? Learn practical steps for how to strategically design instruction that is purposeful, engaging, and rigorous. Learn how these simple components work together as the backbone for both classroom management and effective instruction. This session will be delivered in a conversational format that will invite audience input throughout.

How Firm a Foundation

Room - 2

[Acc, Adm, Gen]

Dr. Mary Lou Miller - Senior Professor in Graduate School of Education, ORU

Dr. Gwtheldene Holzmann - Associate Professor in the Graduate School of Education

The foundation of your school is built on the standards of the Cultural Context Domain. Come and explore the types of evidence necessary to incorporate in your self-study report in this interactive workshop.

Ensuring "Sticky" Learning

Room - 3

[EL, Elem, Gen, Mid/High]

Dr. Janet George - Chair, Undergraduate Education, ORU

Research suggests that the present generation usually has an attention span of just eight seconds! So, how do we ensure that students are actively engaged in the learning process? In this workshop, we will look at some research-based instructional strategies that you can use to help your students learn new information and remember what they learn.

Planeacion Estratégica en Colegios Cristianos

Room - 4

[Adm]

Dr. Julio Orozco - Head of School, Colegio Cristiano Semilla de Vida

Dirigido a directores y personal administrativo interesado en este tema. Pretende ofrecer algunos significados y diferencias entre plan estratégico, plan anual y planes de mejora. Además, orienta sobre la importancia de la cultura institucional al interior de la escuela cristiana.

Got IT?

Room - 5

[Adm, Gen]

Jonathan Warrior - IT Technician, Victory Christian School, Tulsa, OK

Is your school working with dated devices? Do you experience delays in the classroom due to failures with devices? Have you considered the role an IT Technician could play for your school? I will share my "wins and learns" as an IT technician for a K-12 organization.

GLOBAL CHRISTIAN EDUCATORS' CONFERENCE 2024



WORKSHOPS: SESSION C

12:25pm - 1:15 pm

Workshop Tracks

Acc - Accreditation Adm - Administration EL - Early Learning Elem - Elementary Gen - General Mid/High - Middle/High School

Israel Education Next Generation

Room - 6

[Adm, Gen, Mid/High]

Destiny Albritton - Senior Director of Next Gen, Christians United for Israel (CUFI)

This workshop is a presentation to highlight the need for the CUFI Israel Course to be implemented as an elective or core course in Christian high schools to teach high school students about the Jewish people, the miraculous rebirth of the Jewish nation, and the biblical importance of standing with the Jewish community and the nation of Israel. This workshop also provides school administrators and educators with the different opportunities CUFI designed to help as educational resources, including CUFI High School Clubs that can empower student leaders to stand with Israel, CUFI sponsored scholarships to conferences, and trips to Israel.

10 Key Elements for an Effective Christian School Website

Room - 7

[Adm, Gen]

Jen Paul - President, Digital Consultants

Create a site that serves as a cornerstone for your mission and speaks to faith-oriented parents. Is your school's website reflecting the heart of your mission? Join our webinar to uncover the 10 key features every effective Christian school website should have. This session is tailored for school leaders who are passionate about integrating their faith into every aspect of their school's online presence. You'll walk away with valuable strategies to design a website that resonates with faith-oriented parents, fosters a sense of community, and supports your mission of providing a Christ-centered education. Elevate your website from good to Godly with insights that make a lasting impact.

Part 2 - From Ordinary to X-TRORDINARY - 24/7 Leadership Course

Room - 8

[Adm, Gen, Mid/High]

Richard Eley - President & Founder, The Center for Everyday Leadership, Inc

Learn about the carefully selected skills which have been identified as essential traits that every individual should possess to thrive in both personal and professional spheres. This Course equips students with the skills needed to navigate the complexities of today's world with confidence and competence. This session will look at the last five skills.

Release the Potential in All Students - Supporting Lower-Performing Students

Room - 9

[EL, Elem, Gen, Mid/High]

Dr. Carolyn Stubbs - Director of Program for Academic Vision & Empowerment/ Advantage Program Coordinator, ORU

Dr. Libby Adjei - PAVE Learning Specialist, ORU

Help every student in your classroom excel! This interactive workshop will explore effective instructional strategies that can be used to meet the unique needs of lower-performing students. Using research, best practices and biblical principles, participants will be equipped with knowledge, skills, and strategies to implement in their classrooms.

GLOBAL CHRISTIAN EDUCATORS' CONFERENCE 2024



WORKSHOPS: SESSION C

12:25pm - 1:15 pm

Workshop Tracks

Acc - Accreditation Adm - Administration EL - Early Learning Elem - Elementary Gen - General Mid/High - Middle/High School

Help Children and Their Families Talk to God (and Listen)!

Room - 10

[EL, Elem, Mid/High]

Becky McAllister - Chief Program Officer/Interim CEO, KidZ at Heart International

Is there anything more exciting than watching a child learn to speak to and listen to Jesus? Not for us. Unless maybe it is seeing a whole family learn to connect with God, especially if you're a member of that family! This workshop will enable you to use good questions and simple objects to invite your children to spend time in the presence of God!

Preparing for ELEOT® Observations

Room - 11

[Acc, Adm, Elem, Mid/High]

Robert Akers - Head of School, Covenant Christian School, Bloomington, IN

The Effective Learning Environment Observation Tool (ELEOT) is an important part of the Engagement Review process. This session will help administrators and teachers understand how the ELEOT is used and how to prepare for classroom visits during an accreditation review.

Who Did You Run To?

Room - 12

[Adm, Gen, EL, Elem, Mid/High]

Dr. Candera Lomax - Assistant Professor, Graduate School of Education, ORU

When you were a child and you were afraid, who did you run to? This interactive workshop is for the brave hearts. Those who are not afraid to look back to inform how to move forward. While this is not a therapy session, in this workshop, participants will:

- Utilize self-reflection to examine implications for their current role.
- Identify best-practices of Attachment Aware Schools
- Learn strategies to enhance leadership, instruction, program implementation and evaluation of the Christian school educational product.

Integrating Biblical Worldview into Math - Is it Possible?

Room - 13

[Mid/HS]

Jessica Sanders - Administrator, Living Stones Christian School

Without just using a scripture, math seems to be one of the most difficult subjects to integrate Biblical concepts & examples. After 23 years of teaching, I have finally compiled a list of ideas to use in secondary math classrooms.

Maximize Learning Through the Power of the Piano

Room - 14

[Adm, EL, Elem, Gen]

Denie Riggs - Founding Director/ Administrator, Perfect Praise

Michael Riggs - President, Perfect Praise

We will share the amazing benefits of engaging with the piano and how to incorporate its power to benefit the academics of every student at your school.

**WE ARE TAKING EDUCATION TO A
WHOLE NEW LEVEL WITH CUFI'S**



THE ISRAEL COURSE.



TEACHER EDITION



STUDENT EDITION

Promo code:
HIGHSCHOOL



CUFI's **The Israel Course** includes discussion questions, additional resource information, such as videos, articles, exclusive CUFI educational tools and biblical perspectives that highlight what God's Word has to say about our responsibility to stand with Israel and the Jewish people. Perfect for private Christian high schools, this unparalleled resource provides students with the information they need as Christians to better understand the biblical, political, historical, and moral necessity to stand with Israel and the Jewish people.

**Sign up for
Updates about
CUFI High
School and The
Israel Course**





PositiveAction

BIBLE CURRICULUM



God-Focused

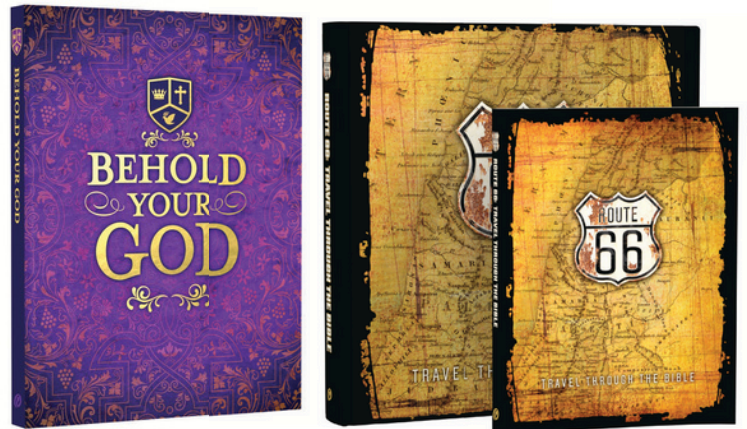
We see Scripture as more than a storybook, how-to manual, or set of rules—it is God's self-revelation to us.

Teacher-Driven

We believe that God grows His children through contact with teachers like you. Our material will equip you, not replace you.

Biblically Centered

With notes on history, culture, language, and application, our curricula can guide students through Scripture and encourage them to develop a relationship with its Author.



GLOBAL CHRISTIAN EDUCATORS' CONFERENCE 2024



WORKSHOPS: SESSION D

1:25 pm - 2:15pm

Workshop Tracks

Acc - Accreditation Adm - Administration EL - Early Learning Elem - Elementary Gen - General Mid/High - Middle/High School

Professional Conduct and Ethics in Christian Schools

Room - 1

[Gen]

Dr. Patrick Otto - Senior Professor in Graduate School of Education, ORU

With ever-shifting cultural and legal conditions, the classroom teacher and administrator finds that they must walk wisely as they carry out their daily activities. This workshop explores various current legal topics pertinent to the classroom teacher and looks at the NCATE/ CAEP teacher dispositions.

Level Up Your Leadership

Room - 2

[EL, Elem, Gen, Mid/High]

Dr. Jared Johnston - Chair, Graduate School of Education, ORU

Whether you are already in leadership and looking to improve, or, you are seeking to develop leaders on your team, this session offers valuable insights on how individuals can level up their leadership. The session is based on recent research in the field of leadership and promises to be engaging and informative.

Transformative Bible Instruction

Room - 3

[Elem]

Dr. Charlene Martin - Senior Professor in Literacy, ORU

Makenzie Hollingsworth - Lead Teacher, Lincoln Christian School, Tulsa, OK

Learn practical steps for integrating Bible instruction with Literacy instruction that will raise the rigor in the authentic application of scriptures into students personal lives. This method provides opportunity for students to routinely use text evidence as their basis for ideas and thinking. See examples of how students were encouraged to engage in rigorous conversation focused on extracting meaning from scripture. The students were transformed as they learn to use the Bible for all thinking in all contexts - a total Biblical integration into their lives.

Exiles on Mission - Raising up Confident Students Speaking Truth to Their Culture

Room - 4

[Adm, Elem, Gen, Mid/High]

Roy Faletti - VP of Customer Care, Positive Action Bible Curriculum

How can we help students understand what it means to be "in, but not of" their culture? What can we do to prepare them to shine light lovingly and confidently into their "crooked and perverse generation"? We'll consider the meaning of culture from a biblical perspective and how we can prepare students to stand strong for Truth in the post-Christian culture in which they are called to serve. The format will be interactive, with time allotted for brief group discussion.

Strategic Planning - The 5 Most Common Challenges with the Process and Ways to Overcome Them

Room - 5

[Acc, Adm, Gen]

David Wagner - Partner and CFO, Schanke Turnbo Frank

Strategic planning can be daunting, and the process tabled because of that. However, when you tackle it with the understanding that the 5 most common challenges with strategic planning are: 1) poor goal setting, 2) goals that are too detailed or complicated and not viewed as attainable, 3) lack of alignment, 4) lack of ownership, and 5) an inability to track progress and a failure to celebrate even the small steps to success, the process may still be challenging, but the results rich and rewarding

GLOBAL CHRISTIAN EDUCATORS' CONFERENCE 2024



WORKSHOPS: SESSION D

1:25 pm - 2:15pm

Workshop Tracks

Acc - Accreditation Adm - Administration EL - Early Learning Elem - Elementary Gen - General Mid/High - Middle/High School

Christian Dual Enrollment - Why and How

Room - 6

[Adm, Gen, Mid/High]

Katie Hesser - Advantage Program Enrollment Manager, ORU

Dr. Carolyn Stubbs - Advantage Academic Coordinator, ORU

Chrissie Belyeu - Advantage Academic Success Coach, ORU

What is Dual Enrollment and why is it beneficial for high school students? Come to this workshop to learn WHY dual enrollment courses taught with a Holy Spirit-empowered, Christian worldview is worth the investment and HOW to implement it at your high school. (This session is beneficial for both domestic and international high schools.)

Assessment to Action: How the Renaissance Ecosystem Supports Every Student

Room - 7

[Adm, Elem, EL, Gen, Mid/High]

Jessica Rowell - Renaissance

Learn how Renaissance Star Assessment data provides purposeful, personalized practice for K-12 students to maximize growth. See every student and reach them where they are! *This session is most appropriate for attendees who are current users of Star assessments.*

Go Beyond Information to Transformation: How to Help Kids Know God

Room - 8

[EL, Elem]

Becky McAllister - Chief Program Officer/Interim CEO, KidZ at Heart International

Develop the insight and skills needed to reinforce existing curriculum with formational approaches and practices. Learn to take a curriculum beyond education methods so that formational approaches can have impact on the child's relationship with God.

Four Royal Houses, One Eternal King

Room - 9

[Mid/High]

John Ahrens, Headmaster, Augustine Christian Academy, Tulsa, OK

Kirk Post, Founder, Augustine Christian Academy, Tulsa, OK

In this workshop, we will discuss the centuries old House System we have implemented at our Christian school to train up student leaders and to create and maintain the unique, Christ-centered, Servant Leadership culture of our school. The mixing of students from grades six through twelve affords an opportunity for older students to mentor the younger and the younger students to learn from the older.

How Micro-Credentials are Advancing Professional Development for Educators!

Room - 10

[Acc, Adm, Gen]

Dr. Amanda Wilson - Associate Dean for the College of Education & Associate Professor of Elementary and Early Childhood Education, ORU

Dr. Kim Boyd - Dean for the College of Education & Assistant to the Provost for Exceptional Teaching & Innovation, ORU

Micro-credentials (MC) should be your next stop for professional development! MCs offer short-term, non-credit or for-credit activities and projects for your teachers to help them learn specific career-critical skills and competencies in areas such as classroom management, assessment, literacy, early childhood education, and more!! Learn how ORU is designing MCs for your institution! Once the MC is complete, the teacher, staff, or administrator earns a digital badge, and multiple digital badges mean more effective teachers in the classroom! Designed for your certified and non-certified teachers, staff & administrators, learn how to take advantage of this enriching professional development and motivate your staff, teachers, and administrators to grow in their profession!

GLOBAL CHRISTIAN EDUCATORS' CONFERENCE 2024



WORKSHOPS: SESSION D

1:25 pm - 2:15pm

Workshop Tracks

Acc - Accreditation Adm - Administration EL - Early Learning Elem - Elementary Gen - General Mid/High - Middle/High School

Public to Private Christian: How to Make a Smooth Transition

Room - 11

[Adm, EL, Elem, Gen, Mid/High]

April Geeslin - Head of School, Azle Christian School, Azle, TX

In this session, we will discuss how teachers can make a smooth transition from public education to Christian education. We will address the main differences and how to keep the great practices but leave the negative ones behind.

Using Social Media and Selling Social Media Sponsorships

Room - 12

[Adm, Gen]

Darla Otto - Development Director, Wesleyan Christian School, Bartlesville, OK

Social Media is an ever-expanding area of opportunity and we will focus on T specific areas in which Christian Schools are not often effective.

- 1) Using social media for enrollment marketing and community relations. Come prepared with your social media stories of successes and less-than-successes and we will refocus on what works.
- 2) Can your school sell social media sponsorships to businesses (who are not parents). Yes, you can and we will share how.

Sit in Your Student's Seat: From Reading to Studying the Bible

Room - 13

[Elem]

Leah Pitchford - DeepRoots Bible Curriculum

Take your students deeper as you teach them to study God's Word instead of simply reading it. In this hands-on workshop you will play the part of the student as you annotate a verse, examine its context, and explore how to apply it. Learn and practice the inductive Bible study steps of observation, interpretation, and application. Bring these skills home and implement them in your classroom, equipping your students to be hearers, examiners, and doers of the Word!

Music is God's Idea

Room - 14

[Adm, Gen, EL, Elem, Mid/High]

Dr. David Dehner - Associate Professor Director of Choral Studies, ORU

An impactful music program is important to a school's academic success, spiritual development and community development. We will take a look at neurology research on music's importance in cognitive development, discuss Biblical principles that connect our purpose in music and respond to music's ability to build community.

**WE'RE
COMMITTED
TO YOUR
STUDENTS'
SUCCESS**



Catapult Learning's
15,000+ educators and
healthcare professionals
are driven by a common
purpose—to positively
impact the educational,
behavioral, and mental
well-being of every child.

**To learn how, stop by
our booth!**

**Catapult Learning
provides best-in-class...**



**Supplemental
Instruction***



**Professional
Learning***



**Student & Family
Support***

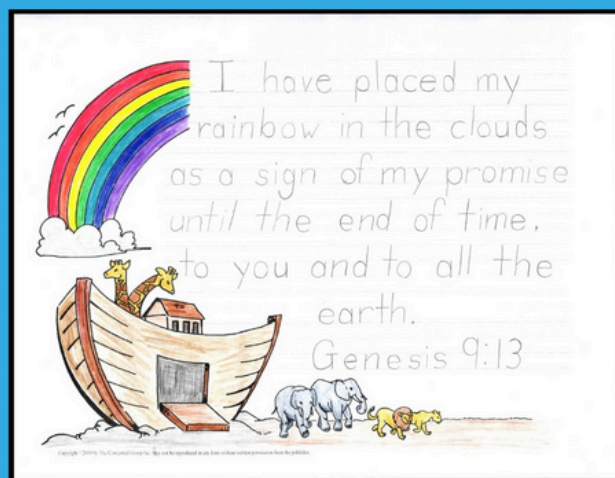
All services eligible for use with EANS or ESSA funds

Warren Dillon | Director of School Partnerships
warren.dillon@catapultlearning.com | 214-784-3557

*Available through Title I, IIA, III, and IV

catapultlearning.com

Academic Excellence + Scripture Focus



Discover our comprehensive,
Bible-based programs for
Handwriting, Spelling,
Science, and Reading.

**A Reason For
Handwriting**

**A Reason For
Spelling**

**A Reason For
Science**

**A Reason For
Reading**

www.AReasonFor.com

**We unite faith
and knowledge.**

abeka.



For over 50 years, Abeka has remained steadfast in its mission to provide the highest quality, faith-based curriculum to America's private Christian schools. Join us in shaping the minds and hearts of students in the knowledge and application of truth.

Visit Abeka.com/ChristianSchool to learn more.

ARF

Character



Leadership



Begin a CHSA Chapter today



www.oruef/CHSA

Scholarship



Service





ORU_{ef}

ORAL ROBERTS EDUCATIONAL FELLOWSHIP
2448 E. 81ST STREET, SUITE 600
TULSA, OKLAHOMA 74137
WWW.ORUEF.ORG